

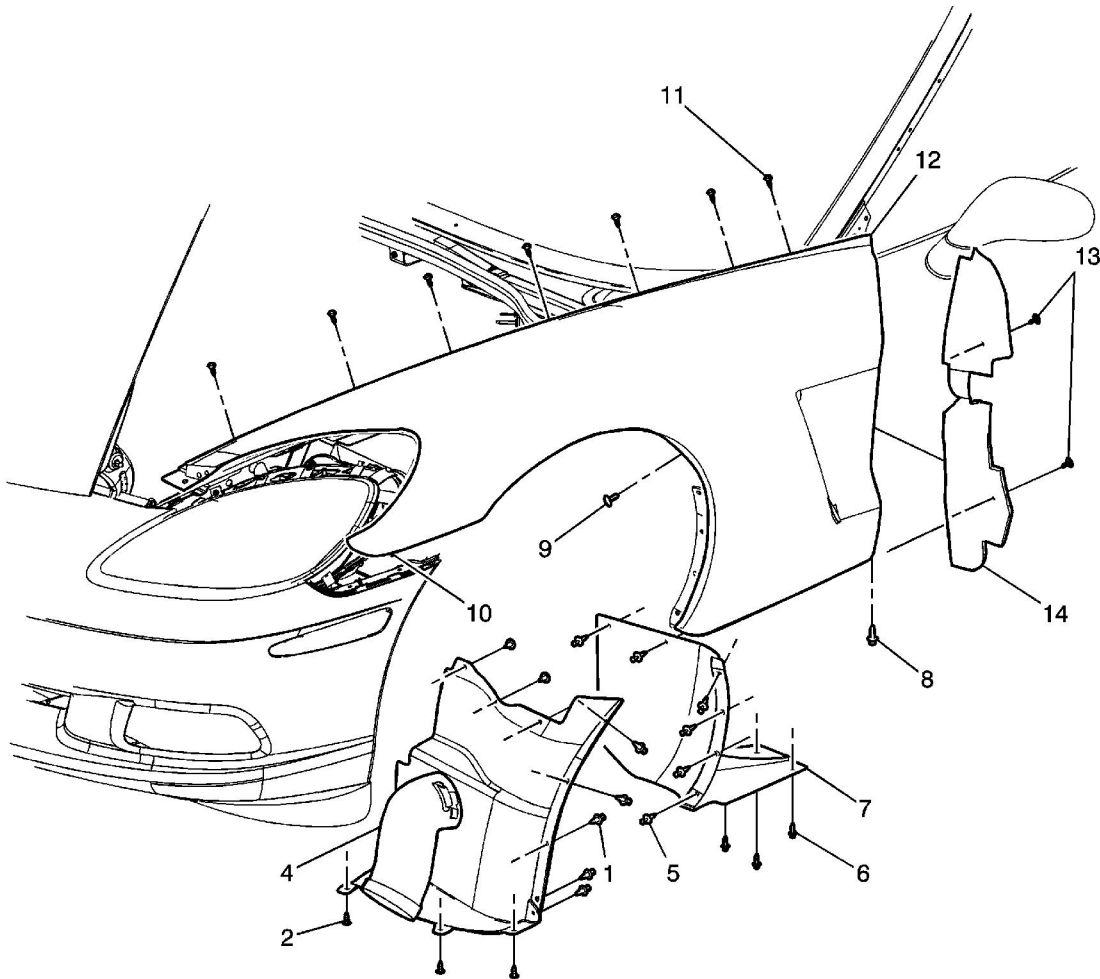
< Back

Forward >

Document ID# 1504027  
2005 Chevrolet Corvette

Print

# Fender, Insulator, Liner, Brake Caliper Cooling Duct Replacement - Front



Callout	Component Name
<p><b>Notice</b></p> <p>Refer to <a href="#">Fastener Notice</a> in Cautions and Notices.</p> <p><i>Fastener Tightening Specifications:</i> Refer to <a href="#">Fastener Tightening Specifications</a> .</p>	

*Front Wheelhouse Liner Replacement - Front***Preliminary Procedures**

1. Lift and support the vehicle. Refer to [Lifting and Jacking the Vehicle](#) in General Information.
2. Remove the tire and wheel assembly. Refer to [Tire and Wheel Removal and Installation](#) in Tires and Wheels.

1	Retainer, Front Wheel House Liner (Qty: 7)
2	Screw, Front Wheel House Liner (Qty: 3) <b>Tighten</b> 9 N·m (80 lb in)
3	Liner, Front Wheelhouse

*Brake Caliper Cooling Duct***Preliminary Procedures**

1. Lift and support the vehicle. Refer to [Lifting and Jacking the Vehicle](#) in General Information.
2. Remove the tire and wheel assembly. Refer to [Tire and Wheel Removal and Installation](#) in Tires and Wheels.

1	Retainer, Front Wheel House Liner (Qty: 7)
2	Screw, Front Wheel House Liner (Qty: 3) <b>Tighten</b> 9 N·m (80 lb in)
3	Liner, Front Wheelhouse
4	Brake Caliper Cooling Duct <b>Tip</b> Turn the brake caliper cooling duct counterclockwise to disengage tab.

*Rear Wheelhouse Liner Replacement***Preliminary Procedures**

1. Lift and support the vehicle. Refer to [Lifting and Jacking the Vehicle](#) in General Information.
2. Remove the tire and wheel assembly. Refer to [Tire and Wheel Removal and Installation](#) in Tires and Wheels.

4	Retainer, Rear Wheel House Liner (Qty: 6)
5	Screw Wheel House Liner (Qty: 3) <b>Tighten</b> 9 N·m (80 lb in)
6	Liner, Rear Wheelhouse

*Fender Assembly Replacement***Preliminary Procedures**

1. Lift and support the vehicle. Refer to [Lifting and Jacking the Vehicle](#) in General Information.
2. Remove the tire and wheel assembly. Refer to [Tire and Wheel Removal and Installation](#) in Tires and Wheels.

*Fender Assembly Replacement***Preliminary Procedures**

1. Lift and support the vehicle. Refer to [Lifting and Jacking the Vehicle](#) in General Information.
2. Remove the tire and wheel assembly. Refer to [Tire and Wheel Removal and Installation](#) in Tires and Wheels.

1	Retainer, Front Wheel House Liner (Qty: 7)
2	Screw, Front Wheel House Liner (Qty: 3) <b>Tighten</b> 9 N·m (80 lb in)
3	Liner, Front Wheelhouse
4	Retainer, Rear Wheel House Liner (Qty: 6)
5	Screw, Rear Wheel House Liner (Qty: 3) <b>Tighten</b> 9 N·m (80 lb in)
6	Liner, Rear Wheelhouse
7	Bolt, Fender (Qty: 1) <b>Tighten</b> 2 N·m (18 lb in)
8	Bolt, Fender (Qty: 1) <b>Tighten</b> 2 N·m (18 lb in)
9	Nut, Fender (Qty: 2) <b>Tighten</b> 7 N·m (62 lb in)
10	Bolt, Fender (Qty: 7) <b>Tighten</b> 2 N·m (18 lb in)
11	Fender Assembly
<i>Front Fender Insulator Assembly Replacement</i>	
12	Retainer, Front Fender Insulator (Qty: 2)
13	Insulator Assembly, Front Fender

&lt;- Back

Forward -&gt;

Document ID# 1504027  
2005 Chevrolet Corvette

Print